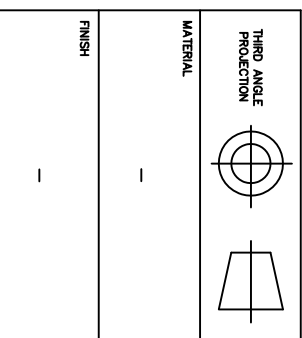
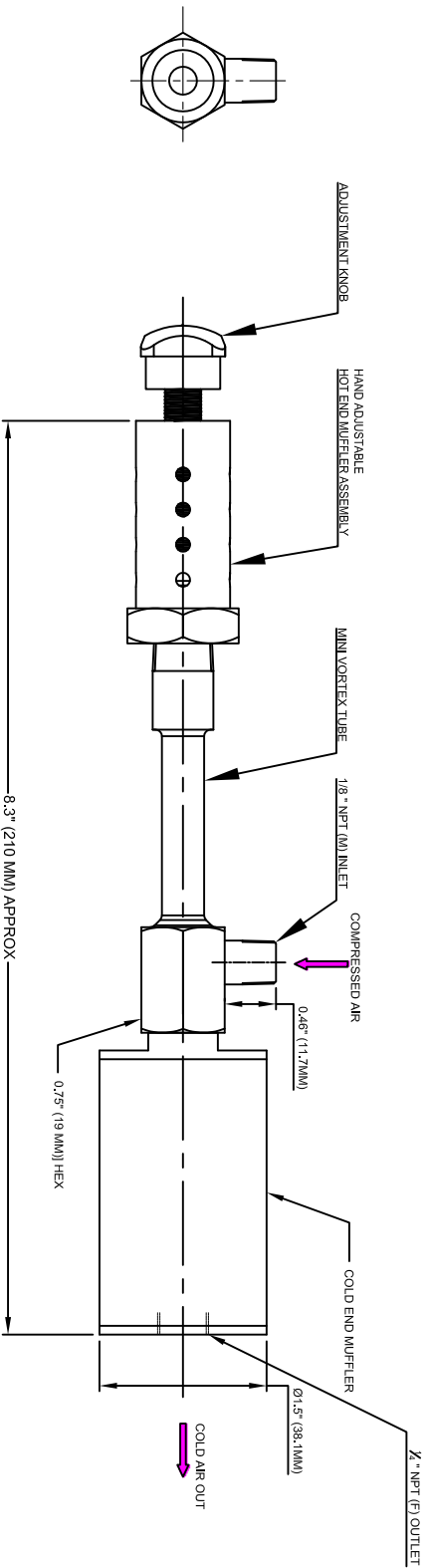


REVISIONS			
REV	DESCRIPTION	DATE	APPROVED
-	-	-	-

- NOTES:
- 1 ALL DIMENSIONS SHOWN ARE IN Inches (mm)
  - 2 ALL DIMENSIONS SHOWN ARE FINISH OPERATIONAL DIMENSIONS WHICH INCLUDE RESIDUAL COATINGS UNLESS OTHERWISE SPECIFIED.
  - 3 PART TO BE FLAT PACKED PROPERLY TO AVOID ANY DAMAGE WHILE SHIPPING & HANDLING.
  - 4 ALL HORIZONTAL DIMENSIONS ARE SYMMETRICAL ABOUT VERTICAL CENTER LINE UNLESS OTHERWISE SPECIFIED.



THIRD ANGLE PROJECTION	REQUIREMENTS-UNLESS OTHERWISE SPECIFIED
---	GENERAL
---	1. DIMS ARE IN INCHES (MM)
---	2. DIMENSIONING AND TOLERANCING IN ACCORDANCE WITH ANSI Y14.5 (1992)
---	3. MACHINE FINISH 125 MICRO INCH RMS
---	4. INTERNAL RADI .015
---	5. BREAK SHARP CORNERS .005 TO .015
---	LIMITS
---	1. LINEAR DIMS. XXX = .005 XX = .010 X = .030
---	2. ANGLES = ± 1/2°
---	3. ROUNDOFF .010 TIR
---	4. HOLES IN ACCORDANCE WITH AND 10397
---	CONTRACT NUMBER -
---	CLIENT -
---	CONTRACTOR -
---	BRAND -
---	CHIRAGS -
---	DESIGN -
---	DATE 22/08/2014
---	DRAWN -
---	CHECKED -
---	ASHISH -
---	PROJECT -
---	Q.A. -
---	MANUFACTURING -
---	STRESS -
---	THERMAL -
---	MATERIALS -
---	MECHANISM -
---	ELECTRICAL -
---	SCALE 1:1
---	CAD NO SVT+AHM+CEM
---	SHEET 1 OF 1
---	RELEASE P
---	REV -

1. DIMS ARE IN INCHES (MM)  
 2. DIMENSIONING AND TOLERANCING IN ACCORDANCE WITH ANSI Y14.5 (1992)  
 3. MACHINE FINISH 125 MICRO INCH RMS  
 4. INTERNAL RADI .015  
 5. BREAK SHARP CORNERS .005 TO .015

REQUIREMENTS-UNLESS OTHERWISE SPECIFIED
GENERAL
1. DIMS ARE IN INCHES (MM)
2. DIMENSIONING AND TOLERANCING IN ACCORDANCE WITH ANSI Y14.5 (1992)
3. MACHINE FINISH 125 MICRO INCH RMS
4. INTERNAL RADI .015
5. BREAK SHARP CORNERS .005 TO .015
LIMITS
1. LINEAR DIMS. XXX = .005 XX = .010 X = .030
2. ANGLES = ± 1/2°
3. ROUNDOFF .010 TIR
4. HOLES IN ACCORDANCE WITH AND 10397
CONTRACT NUMBER -
CLIENT -
CONTRACTOR -
BRAND -
CHIRAGS -
DESIGN -
DATE 22/08/2014
DRAWN -
CHECKED -
ASHISH -
PROJECT -
Q.A. -
MANUFACTURING -
STRESS -
THERMAL -
MATERIALS -
MECHANISM -
ELECTRICAL -
SCALE 1:1
CAD NO SVT+AHM+CEM
SHEET 1 OF 1
RELEASE P
REV -

**NEX FLOW AIR PRODUCTS CORP.**  
 10520 YONGE STREET, UNIT 35B-220, RICHMOND HILL, ON L4C 3C7  
 TEL: (416) 410-1313 & FAX: (416) 410-1806 www.nex-flow.com

**TITLE**  
 SMALL VORTEX TUBE WITH GENERATOR,  
 HAND ADJUSTABLE HOT END MUFFLER ASSEMBLY +  
 COLD MUFFLER

CONTRACT NUMBER	CLIENT	CONTRACTOR	BRAND	CHIRAGS	DESIGN	DATE	DRAWN	CHECKED	ASHISH	PROJECT	Q.A.	MANUFACTURING	STRESS	THERMAL	MATERIALS	MECHANISM	ELECTRICAL	SCALE	CAD NO	SHEET	OF	REV	
---	---	---	---	---	---	22/08/2014	---	---	---	---	---	---	---	---	---	---	---	1:1	SVT+AHM+CEM	1	1	P	-