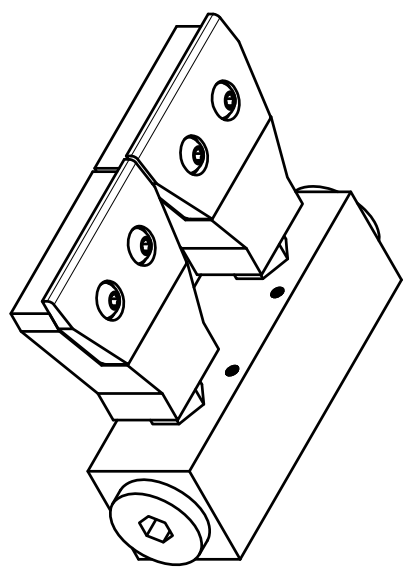
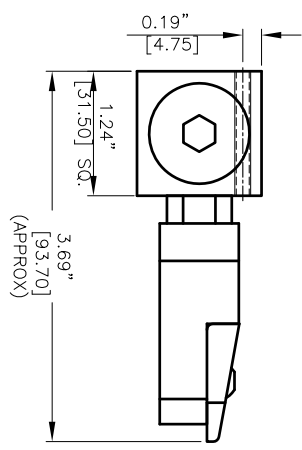
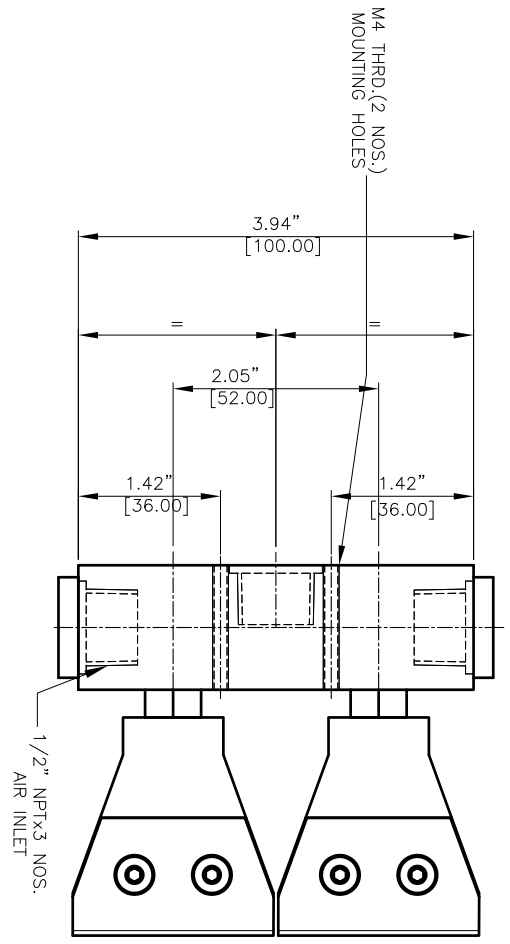


REVISIONS		DATE	APPROVED
REV	DESCRIPTION		
1	-	-	-



REVISIONS	DATE	APPROVED
1	-	-

<b>REQUIREMENTS - FINISHES</b> OTHER FINISHES SPECIFIED 1. FINISH AS SHOWN (SEE FIELD) 2. DIMENSIONING AND TOLERANCING IN ACCORDANCE WITH ASME Y14.5 (1982) 3. MACHINE FINISH 125 MICRO INCH RMS & BREAK SHARP CORNERS .005 TO .015 4. HOLES IN ACCORDANCE WITH AND 10397	<b>CONTRACT NUMBER</b> CLIENT CONTRACTOR DRAWN CHECKED DATE APPROVED PRODUCT	<b>MANUFACTURING</b> MATERIALS FINISHES ELECTRICAL	<b>SIZE</b> <b>DATE CODE</b> <b>DWG NO.</b> <b>CAD NO.</b> <b>HUMAN-24-FJ</b>	<b>RELDATE</b> <b>REV</b>
<b>1. LINEAR DIMS:</b> .004 .005 .002 .010 <b>2. ANGLES = ± 1/2°</b> <b>3. ROUNDTOP .010 MIN</b>	<b>DATE</b> 28/09/2014		<b>46002HF+47011</b>	

<b>FINISH</b> AL/SS304/SS316L	<b>TURNING AND PROJECTION</b>	<b>PART NO.</b> NEXT ASSEMBLY USED ON QTY PER PART NO.	<b>REVISIONS</b> 1 2 3 4	<b>DATE</b> 28/09/2014	<b>APPROVED</b>
----------------------------------	-------------------------------	---	--------------------------------------	---------------------------	-----------------

NEX FLOW AIR PRODUCTS CORP.  
 10520 YONCE STREET, UNIT 259-220 RICHMOND HILL, ON L4C 3C7  
 TEL: (416) 410-1313 & FAX: (416) 410-1806 WWW.NEX-FLOW.COM

2 PORT HIGH FLOW MANIFOLD  
 WITH 47011 FLATJET

8 7 6 5 4 3 2 1