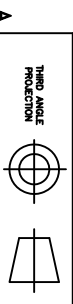
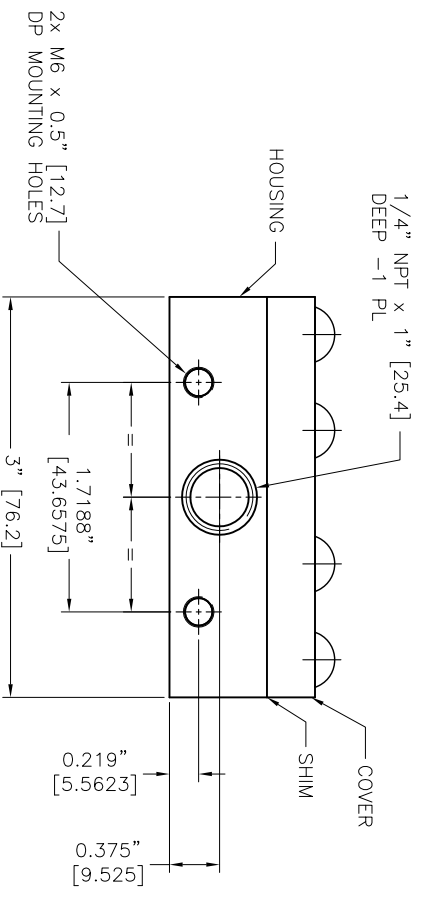
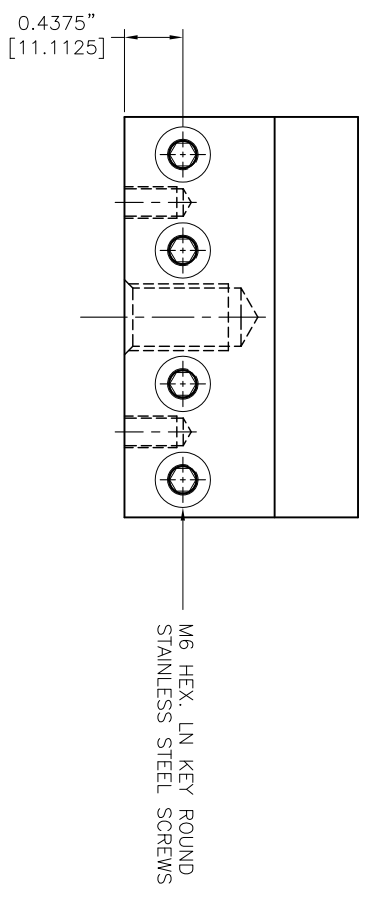
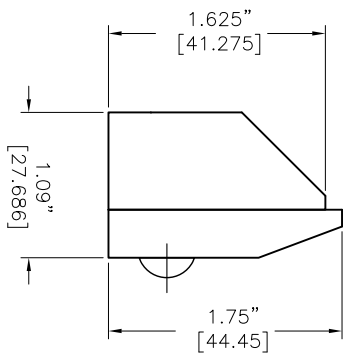


- NOTES:
- 1 ALL DIMENSIONS SHOWN ARE FINISH OPERATIONAL DIMENSIONS WHICH INCLUDE RESIDUAL COATINGS UNLESS OTHERWISE SPECIFIED.
 - 2 PART TO BE PACKED PROPERLY TO AVOID ANY DAMAGE WHILE SHIPPING & HANDLING.
 - 3 ALL HORIZONTAL DIMENSIONS ARE SYMMETRICAL ABOUT CENTER LINE UNLESS OTHERWISE SPECIFIED.



THIRD ANGLE PROJECTION

MATERIAL
SS 304

FINISH
-

REQUIREMENTS-UNLESS OTHERWISE SPECIFIED

GENERAL

CONTRACT NUMBER -

CLIENT

CONTRACTOR

DATE

DESIGN

DATE

DATE

DATE

DATE

DATE

DATE

1. DIMS ARE IN INCHES (MM)

2. DIMENSIONING AND TOLERANCING IN ACCORDANCE WITH ASME Y14.5 (1982)

3. MINIMAL FINISH 125 MICRO INCH RMS

4. BREAK SHARP CORNERS .005 TO .015

5. BREAK SHARP CORNERS .005 TO .015

1. LINEAR DIMS

2. ANGLES = 20°

3. RADIUS = 1/8"

4. HOLES IN ACCORDANCE WITH AND 10287

10520 YONCE STREET, UNIT 358-220, RICHMOND HILL, ON L4C 3C7

TEL: (416) 410-1313 & FAX: (416) 410-1806 WWW.NEX-FLOW.COM

CONTRACT NUMBER -

CLIENT

CONTRACTOR

DATE

DESIGN

DATE

DATE

DATE

DATE

DATE

DATE

1. DIMS ARE IN INCHES (MM)

2. DIMENSIONING AND TOLERANCING IN ACCORDANCE WITH ASME Y14.5 (1982)

3. MINIMAL FINISH 125 MICRO INCH RMS

4. BREAK SHARP CORNERS .005 TO .015

5. BREAK SHARP CORNERS .005 TO .015

1. LINEAR DIMS

2. ANGLES = 20°

3. RADIUS = 1/8"

4. HOLES IN ACCORDANCE WITH AND 10287

10520 YONCE STREET, UNIT 358-220, RICHMOND HILL, ON L4C 3C7

TEL: (416) 410-1313 & FAX: (416) 410-1806 WWW.NEX-FLOW.COM

CONTRACT NUMBER -

CLIENT

CONTRACTOR

DATE

DESIGN

DATE

DATE

DATE

DATE

DATE

DATE

1. DIMS ARE IN INCHES (MM)

2. DIMENSIONING AND TOLERANCING IN ACCORDANCE WITH ASME Y14.5 (1982)

3. MINIMAL FINISH 125 MICRO INCH RMS

4. BREAK SHARP CORNERS .005 TO .015

5. BREAK SHARP CORNERS .005 TO .015

1. LINEAR DIMS

2. ANGLES = 20°

3. RADIUS = 1/8"

4. HOLES IN ACCORDANCE WITH AND 10287

10520 YONCE STREET, UNIT 358-220, RICHMOND HILL, ON L4C 3C7

TEL: (416) 410-1313 & FAX: (416) 410-1806 WWW.NEX-FLOW.COM

CONTRACT NUMBER -

CLIENT

CONTRACTOR

DATE

DESIGN

DATE

DATE

DATE

DATE

DATE

DATE

1. DIMS ARE IN INCHES (MM)

2. DIMENSIONING AND TOLERANCING IN ACCORDANCE WITH ASME Y14.5 (1982)

3. MINIMAL FINISH 125 MICRO INCH RMS

4. BREAK SHARP CORNERS .005 TO .015

5. BREAK SHARP CORNERS .005 TO .015

1. LINEAR DIMS

2. ANGLES = 20°

3. RADIUS = 1/8"

4. HOLES IN ACCORDANCE WITH AND 10287

10520 YONCE STREET, UNIT 358-220, RICHMOND HILL, ON L4C 3C7

TEL: (416) 410-1313 & FAX: (416) 410-1806 WWW.NEX-FLOW.COM

CONTRACT NUMBER -

CLIENT

CONTRACTOR

DATE

DESIGN

DATE

DATE

DATE

DATE

DATE

DATE

1. DIMS ARE IN INCHES (MM)

2. DIMENSIONING AND TOLERANCING IN ACCORDANCE WITH ASME Y14.5 (1982)

3. MINIMAL FINISH 125 MICRO INCH RMS

4. BREAK SHARP CORNERS .005 TO .015

5. BREAK SHARP CORNERS .005 TO .015

1. LINEAR DIMS

2. ANGLES = 20°

3. RADIUS = 1/8"

4. HOLES IN ACCORDANCE WITH AND 10287

10520 YONCE STREET, UNIT 358-220, RICHMOND HILL, ON L4C 3C7

TEL: (416) 410-1313 & FAX: (416) 410-1806 WWW.NEX-FLOW.COM

CONTRACT NUMBER -

CLIENT

CONTRACTOR

DATE

DESIGN

DATE

DATE

DATE

DATE

DATE

DATE

1. DIMS ARE IN INCHES (MM)

2. DIMENSIONING AND TOLERANCING IN ACCORDANCE WITH ASME Y14.5 (1982)

3. MINIMAL FINISH 125 MICRO INCH RMS

4. BREAK SHARP CORNERS .005 TO .015

5. BREAK SHARP CORNERS .005 TO .015

1. LINEAR DIMS

2. ANGLES = 20°

3. RADIUS = 1/8"

4. HOLES IN ACCORDANCE WITH AND 10287

10520 YONCE STREET, UNIT 358-220, RICHMOND HILL, ON L4C 3C7

TEL: (416) 410-1313 & FAX: (416) 410-1806 WWW.NEX-FLOW.COM

CONTRACT NUMBER -

CLIENT

CONTRACTOR

DATE

DESIGN

DATE

DATE

DATE

DATE

DATE

DATE

1. DIMS ARE IN INCHES (MM)

2. DIMENSIONING AND TOLERANCING IN ACCORDANCE WITH ASME Y14.5 (1982)

3. MINIMAL FINISH 125 MICRO INCH RMS

4. BREAK SHARP CORNERS .005 TO .015

5. BREAK SHARP CORNERS .005 TO .015

1. LINEAR DIMS

2. ANGLES = 20°

3. RADIUS = 1/8"

4. HOLES IN ACCORDANCE WITH AND 10287

10520 YONCE STREET, UNIT 358-220, RICHMOND HILL, ON L4C 3C7

TEL: (416) 410-1313 & FAX: (416) 410-1806 WWW.NEX-FLOW.COM

CONTRACT NUMBER -

CLIENT

CONTRACTOR

DATE

DESIGN

DATE

DATE

DATE

DATE

DATE

DATE

1. DIMS ARE IN INCHES (MM)

2. DIMENSIONING AND TOLERANCING IN ACCORDANCE WITH ASME Y14.5 (1982)

3. MINIMAL FINISH 125 MICRO INCH RMS

4. BREAK SHARP CORNERS .005 TO .015

5. BREAK SHARP CORNERS .005 TO .015

1. LINEAR DIMS

2. ANGLES = 20°

3. RADIUS = 1/8"

4. HOLES IN ACCORDANCE WITH AND 10287

10520 YONCE STREET, UNIT 358-220, RICHMOND HILL, ON L4C 3C7

TEL: (416) 410-1313 & FAX: (416) 410-1806 WWW.NEX-FLOW.COM

CONTRACT NUMBER -

CLIENT

CONTRACTOR

DATE

DESIGN

DATE

DATE

DATE

DATE

DATE

DATE

1. DIMS ARE IN INCHES (MM)

2. DIMENSIONING AND TOLERANCING IN ACCORDANCE WITH ASME Y14.5 (1982)

3. MINIMAL FINISH 125 MICRO INCH RMS

4. BREAK SHARP CORNERS .005 TO .015

5. BREAK SHARP CORNERS .005 TO .015

1. LINEAR DIMS

2. ANGLES = 20°

3. RADIUS = 1/8"

4. HOLES IN ACCORDANCE WITH AND 10287

10520 YONCE STREET, UNIT 358-220, RICHMOND HILL, ON L4C 3C7

TEL: (416) 410-1313 & FAX: (416) 410-1806 WWW.NEX-FLOW.COM

CONTRACT NUMBER -

CLIENT

CONTRACTOR

DATE

DESIGN

DATE

DATE

DATE

DATE

DATE

DATE

1. DIMS ARE IN INCHES (MM)

2. DIMENSIONING AND TOLERANCING IN ACCORDANCE WITH ASME Y14.5 (1982)

3. MINIMAL FINISH 125 MICRO INCH RMS

4. BREAK SHARP CORNERS .005 TO .015

5. BREAK SHARP CORNERS .005 TO .015

1. LINEAR DIMS

2. ANGLES = 20°

3. RADIUS = 1/8"

4. HOLES IN ACCORDANCE WITH AND 10287

10520 YONCE STREET, UNIT 358-220, RICHMOND HILL, ON L4C 3C7

TEL: (416) 410-1313 & FAX: (416) 410-1806 WWW.NEX-FLOW.COM

CONTRACT NUMBER -

CLIENT

CONTRACTOR

DATE

DESIGN

DATE

DATE

DATE

DATE

DATE

DATE

1. DIMS ARE IN INCHES (MM)

2. DIMENSIONING AND TOLERANCING IN ACCORDANCE WITH ASME Y14.5 (1982)

3. MINIMAL FINISH 125 MICRO INCH RMS

4. BREAK SHARP CORNERS .005 TO .015

5. BREAK SHARP CORNERS .005 TO .015

1. LINEAR DIMS

2. ANGLES = 20°

3. RADIUS = 1/8"

4. HOLES IN ACCORDANCE WITH AND 10287

10520 YONCE STREET, UNIT 358-220, RICHMOND HILL, ON L4C 3C7

TEL: (416) 410-1313 & FAX: (416) 410-1806 WWW.NEX-FLOW.COM

CONTRACT NUMBER -

CLIENT

CONTRACTOR

DATE

DESIGN

DATE

DATE

DATE

DATE

DATE