

RING BLADE™ AIR WIPE

Blowoff, clean, cool and dry cable, pipe, extrusions, hose, wire and rope. Split design requires zero threading. Uniform 360 degree variable flow and force for temperatures up to 800°F (427°C)

WHAT ARE THEY - REASONS TO USE

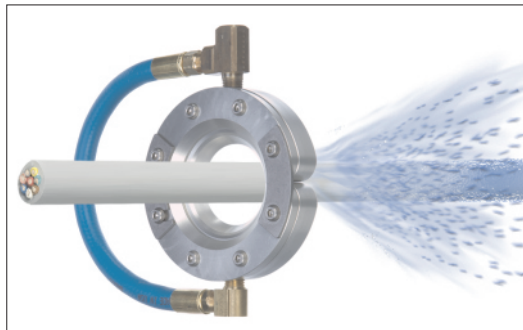
Air Wipe Blowoff System - Ring Blade™ from Nex Flow™ is easy to mount and maintain, and reduces both compressed air consumption and noise levels.

It produces a "laminar" flow of air along its 360° angle using the "Coanda" effect which "entrains" a large volume of air from the surrounding area along with the small amount of compressed air from the Ring Blade™ air-saver wiper-blade to produce an output flow up to 30 times.

The Ring Blade™ air wipe blowoff system payback on compressed air savings can be as short as a few weeks when compared to nozzle "rings" or simple annular slots used by other air wiping systems. Blowoff, cool, and clean products such as cable, pipe, wire and hose.

RING BLADE™ AIR WIPE BLOWOFF SYSTEM BENEFITS:

- ▶ Longer life in difficult environments for aluminum models because of anodizing, 316L stainless models for high temperate and corrosive environments.
- ▶ Easy to install and maintain and allows removal of a continuous piece.
- ▶ Even blowoff around the part, light in weight and compact.
- ▶ Lower compressed air consumption than a ring of drilled pipe or ring of open jets and nozzles.
- ▶ Maintenance free with output easily controlled, safe to use.



RING BLADE™ AIR WIPE BLOWOFF SYSTEM FEATURES:

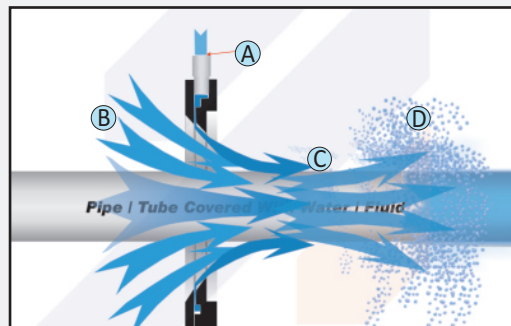
- ▶ No moving parts - anodized aluminum or 316L stainless steel
- ▶ Compact design, simple, lightweight and portable.
- ▶ Full Flow Split Design - air across entire circumference. Designed as two pieces hinged together to open & close around the part. The 2 pieces are connected with a hose to deliver the compressed air using a single connection (except for the 9" and 11" which have four inlet connections or two connections per half).
- ▶ Driven by air not electricity.
- ▶ High airflow amplification.
- ▶ Instant on-off, no electricity or explosion hazard.

RING BLADE™ AIR WIPE BLOWOFF SYSTEM APPLICATIONS:

- ▶ Blowoff of dust, liquid, contaminants and uniformly wipe surfaces.
- ▶ Dry after washing, plating or coating.
- ▶ Cool hot surfaces.
- ▶ Dry extruded profiles, plastic tubing, hose, wire, fiber optics, ribbon, strips.
- ▶ Prevent solution carryover and avoid cross contamination.
- ▶ Clean paint gun tips.
- ▶ Remove access water, coatings, oil.

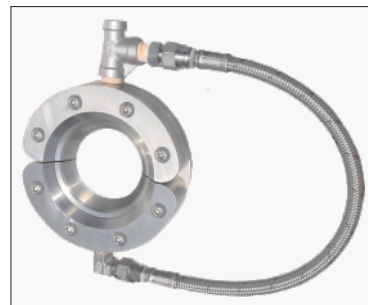
RING BLADE™ AIR WIPE SYSTEM - HOW IT WORKS:

Ring Blade™ Air Wipe - Compressed air enters at point (A) into an annular chamber and throttled through a small ring nozzle at high velocity. This air stream clings to the "coanda" profile directing the air stream down toward the surface which is angled to create a "cone" style directed force to best clean, wipe and dry a surface. The surrounding air is entrained at point (B) creating an amplified 360 degree conical airflow at point (C) to uniformly wipe the surface of the of the material running through the Ring Blade™. The wet or dirty material (D) direction of travel is against the flow.

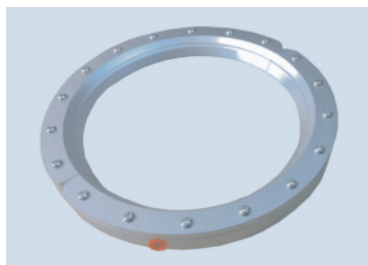


Ring Blade™ Air Wipe™ is available in eight standard sizes in anodized aluminum: ½" (12.7 mm), 1" (25.4 mm), 2" (50.8 mm), 3" (76 mm), 4" (102 mm), 5" (127 mm), 6" (152 mm) and 7" (178 mm) (with brass fittings and special rubberized plastic hose for standard applications or with stainless steel hose for moderate temperatures up to 400 F (204 C). The 9" (229 mm) and 11" (279 mm) is available in anodized aluminum. No hose supplied. May be used for standard and moderate temperatures to 400 F (204 C). **Ring Blade™ Air Wipe™** also is available in eight sizes in 316L stainless steel: ½" (12.7 mm), 1" (25.4 mm), 2" (50.8 mm), 3" (76 mm), 4" (102 mm), 5" (127 mm), 6" (152 mm) and 7" (178 mm) with stainless steel fittings and hose for high temperatures up to 800 F (427 C) and for corrosive environments.

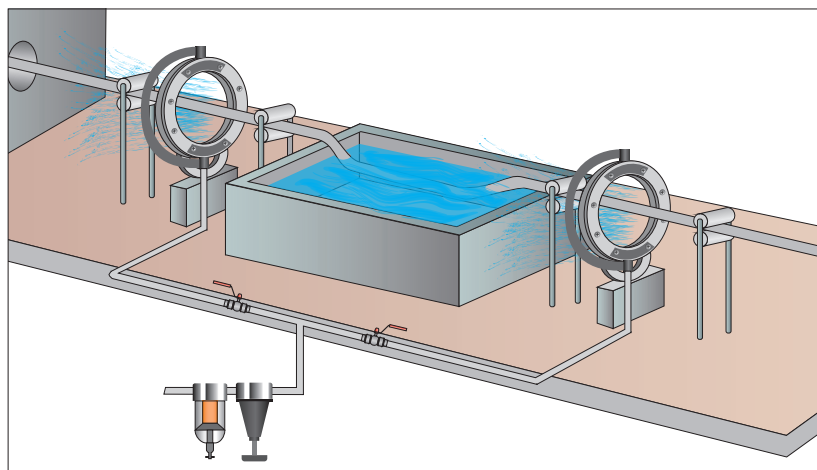
STANDARD APPLICATIONS	X-STREAM™ MODERATE TEMP. TO 400°F (204°C)	316L STAINLESS HIGH TEMP. TO 800°F (427°C) and CORROSIVE ENVIRONMENTS	A Inches (mm)	B Inches (mm)	C Inches (mm)	Compressed Air Connection
20000	20000X	20000XS-316L	0.50" (12.7)	3.25" (82.6)	2.63" (66.8)	1/4" NPT
20001	20001X	20001XS-316L	1.00" (25.4)	3.75" (95.3)	3.00" (76.2)	1/4" NPT
20002	20002X	20002XS-316L	2.00" (50.8)	4.75" (121)	4.00" (102.6)	1/4" NPT
20003	20003X	20003XS-316L	3.00" (76.2)	5.75" (146)	5.00" (127)	1/4" NPT
20004	20004X	20004XS-316L	4.00" (102.6)	6.75" (171)	6.00" (153)	1/4" NPT
20005	20005X	20005XS-316L	5.00" (127.0)	7.75" (197)	7.00" (178)	3/8" NPT
20006	20006X	20006XS-316L	6.00" (153)	8.75" (222)	8.00" (203)	3/8" NPT
20007	20007X	20007XS-316L	7.00" (178)	9.75" (248)	9.00" (229)	3/8" NPT
	20009		9.00" (229)	11.75" (298.5)	11.00" (279)	4x1/4" NPT
	20011		11.00" (279)	13.75" (349)	13.00" (330)	4x1/4" NPT



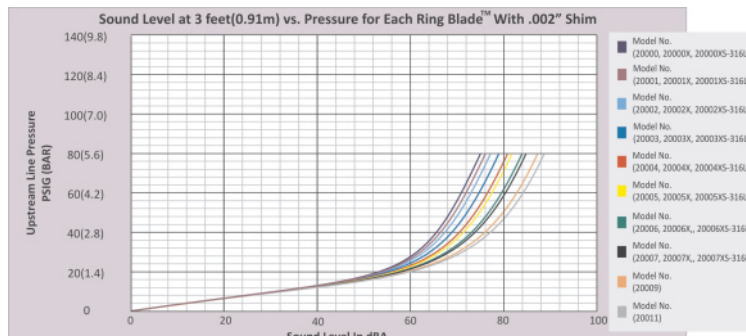
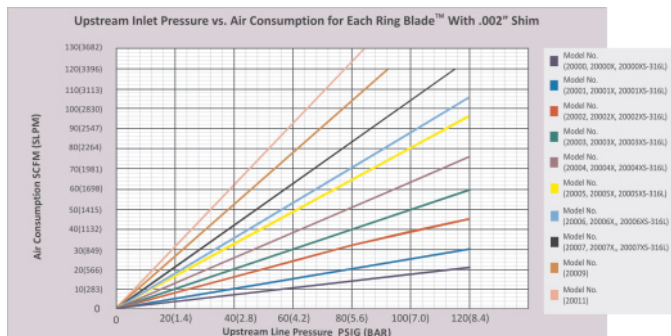
High Temperature 316L Stainless Steel Ring Blade™ c/w all stainless fittings and hose.



9" and 11" units have two air inlets per side.



Two **Model 20002 - 2" Ring Blade™ Air Wipe** system are used to clean and dry extruded automotive trim. The design of the air wipe allows the blowoff force to get into the automotive trim gaps and effectively clean and dry the extruded part. If a bubble occurs in the trim, the Ring Blade™ air wipe can be opened up to pass the bubble without disrupting production.



ALUMINUM RING BLADE™ AIR WIPE SYSTEMS - UP TO 150°F (66°C)

PART NO.	DESCRIPTION
20000	½" Anodized Aluminum Ring Blade™ Air Wipe only
20001	1" Anodized Aluminum Ring Blade™ Air Wipe only
20002	2" Anodized Aluminum Ring Blade™ Air Wipe only
20003	3" Anodized Aluminum Ring Blade™ Air Wipe only
20004	4" Anodized Aluminum Ring Blade™ Air Wipe only
20005	5" Anodized Aluminum Ring Blade™ Air Wipe only
20006	6" Anodized Aluminum Ring Blade™ Air Wipe only
20007	7" Anodized Aluminum Ring Blade™ Air Wipe only
21000	½" Anodized Aluminum Ring Blade™ Air Wipe plus Filter with Auto Drain
21001	1" Anodized Aluminum Ring Blade™ Air Wipe plus Filter with Auto Drain
21002	2" Anodized Aluminum Ring Blade™ Air Wipe plus Filter with Auto Drain
21003	3" Anodized Aluminum Ring Blade™ Air Wipe plus Filter with Auto Drain
21004	4" Anodized Aluminum Ring Blade™ Air Wipe plus Filter with Auto Drain
21005	5" Anodized Aluminum Ring Blade™ Air Wipe plus Filter with Auto Drain
21006	6" Anodized Aluminum Ring Blade™ Air Wipe plus Filter with Auto Drain
21007	7" Anodized Aluminum Ring Blade™ Air Wipe plus Filter with Auto Drain
22000	½" Anodized Aluminum Ring Blade™ Air Wipe plus Filter with Auto Drain & Regulator with Gauge
22001	1" Anodized Aluminum Ring Blade™ Air Wipe plus Filter with Auto Drain & Regulator with Gauge
22002	2" Anodized Aluminum Ring Blade™ Air Wipe plus Filter with Auto Drain & Regulator with Gauge
22003	3" Anodized Aluminum Ring Blade™ Air Wipe plus Filter with Auto Drain & Regulator with Gauge
22004	4" Anodized Aluminum Ring Blade™ Air Wipe plus Filter with Auto Drain & Regulator with Gauge
22005	5" Anodized Aluminum Ring Blade™ Air Wipe plus Filter with Auto Drain & Regulator with Gauge
22006	6" Anodized Aluminum Ring Blade™ Air Wipe plus Filter with Auto Drain & Regulator with Gauge
22007	7" Anodized Aluminum Ring Blade™ Air Wipe plus Filter with Auto Drain & Regulator with Gauge

ALUMINUM RING BLADE™ AIR WIPE SYSTEMS - UP TO 400°F (204°C)

PART NO.	DESCRIPTION
20000X	½" Medium Temperature Anodized Aluminum Ring Blade™ Air Wipe only
20001X	1" Medium Temperature Anodized Aluminum Ring Blade™ Air Wipe only
20002X	2" Medium Temperature Anodized Aluminum Ring Blade™ Air Wipe only
20003X	3" Medium Temperature Anodized Aluminum Ring Blade™ Air Wipe only
20004X	4" Medium Temperature Anodized Aluminum Ring Blade™ Air Wipe only
20005X	5" Medium Temperature Anodized Aluminum Ring Blade™ Air Wipe only
20006X	6" Medium Temperature Anodized Aluminum Ring Blade™ Air Wipe only
20007X	7" Medium Temperature Anodized Aluminum Ring Blade™ Air Wipe only
21000X	½" Medium Temperature Anodized Aluminum Ring Blade™ Air Wipe plus Filter with Auto Drain
21001X	1" Medium Temperature Anodized Aluminum Ring Blade™ Air Wipe plus Filter with Auto Drain
21002X	2" Medium Temperature Anodized Aluminum Ring Blade™ Air Wipe plus Filter with Auto Drain
21003X	3" Medium Temperature Anodized Aluminum Ring Blade™ Air Wipe plus Filter with Auto Drain
21004X	4" Medium Temperature Anodized Aluminum Ring Blade™ Air Wipe plus Filter with Auto Drain
21005X	5" Medium Temperature Anodized Aluminum Ring Blade™ Air Wipe plus Filter with Auto Drain
21006X	6" Medium Temperature Anodized Aluminum Ring Blade™ Air Wipe plus Filter with Auto Drain
21007X	7" Medium Temperature Anodized Aluminum Ring Blade™ Air Wipe plus Filter with Auto Drain
22000X	½" Medium Temperature Anodized Aluminum Ring Blade™ Air Wipe + Filter with Auto Drain & Reg. with Gauge
22001X	1" Medium Temperature Anodized Aluminum Ring Blade™ Air Wipe + Filter with Auto Drain & Reg. with Gauge
22002X	2" Medium Temperature Anodized Aluminum Ring Blade™ Air Wipe + Filter with Auto Drain & Reg. with Gauge
22003X	3" Medium Temperature Anodized Aluminum Ring Blade™ Air Wipe + Filter with Auto Drain & Reg. with Gauge
22004X	4" Medium Temperature Anodized Aluminum Ring Blade™ Air Wipe + Filter with Auto Drain & Reg. with Gauge
22005X	5" Medium Temperature Anodized Aluminum Ring Blade™ Air Wipe + Filter with Auto Drain & Reg. with Gauge
22006X	6" Medium Temperature Anodized Aluminum Ring Blade™ Air Wipe + Filter with Auto Drain & Reg. with Gauge
22007X	7" Medium Temperature Anodized Aluminum Ring Blade™ Air Wipe + Filter with Auto Drain & Reg. with Gauge
20009	9" Medium Temperature Anodized Aluminum Ring Blade™ Air Wipe Only
20011	11" Medium Temperature Anodized Aluminum Ring Blade™ Air Wipe Only
21009	9" Medium Temperature Anodized Aluminum Ring Blade™ Air Wipe + Filter with Auto Drain
21011	11" Medium Temperature Anodized Aluminum Ring Blade™ Air Wipe + Filter with Auto Drain
22009	9" Medium Temperature Anodized Aluminum Ring Blade™ Air Wipe + Filter with Auto Drain & Reg. with Gauge
22011	11" Medium Temperature Anodized Aluminum Ring Blade™ Air Wipe + Filter with Auto Drain & Reg. with Gauge

EXTRA STAINLESS STEEL SHIMS - .002" (.050 MM) FOR RING BLADE™ AIR WIPE SYSTEMS

PART NO.	DESCRIPTION
20100	½" Stainless Steel Shim - .002" (.050 mm) for ½" Ring Blade™ Air Wipe System
20101	1" Stainless Steel Shim - .002" (.050 mm) for 1" Ring Blade™ Air Wipe System
20102	2" Stainless Steel Shim - .002" (.050 mm) for 2" Ring Blade™ Air Wipe System
20103	3" Stainless Steel Shim - .002" (.050 mm) for 3" Ring Blade™ Air Wipe System
20104	4" Stainless Steel Shim - .002" (.050 mm) for 4" Ring Blade™ Air Wipe System
20105	5" Stainless Steel Shim - .002" (.050 mm) for 5" Ring Blade™ Air Wipe System
20106	6" Stainless Steel Shim - .002" (.050 mm) for 6" Ring Blade™ Air Wipe System
20107	7" Stainless Steel Shim - .002" (.050 mm) for 7" Ring Blade™ Air Wipe System
20109	9" Stainless Steel Shim - .002" (.050 mm) for 9" Ring Blade™ Air Wipe System
20111	11" Stainless Steel Shim - .002" (.050 mm) for 11" Ring Blade™ Air Wipe System

STAINLESS STEEL RING BLADE™ AIR WIPE SYSTEMS - UP TO 800°F (427°C)

PART NO.	DESCRIPTION
20000XS-316L	½" High Temperature 316L Stainless Steel Ring Blade™ Air Wipe only
20001XS-316L	1" High Temperature 316L Stainless Steel Ring Blade™ Air Wipe only
20002XS-316L	2" High Temperature 316L Stainless Steel Ring Blade™ Air Wipe only
20003XS-316L	3" High Temperature 316L Stainless Steel Ring Blade™ Air Wipe only
20004XS-316L	4" High Temperature 316L Stainless Steel Ring Blade™ Air Wipe only
20005XS-316L	5" High Temperature 316L Stainless Steel Ring Blade™ Air Wipe only
20006XS-316L	6" High Temperature 316L Stainless Steel Ring Blade™ Air Wipe only
20007XS-316L	7" High Temperature 316L Stainless Steel Ring Blade™ Air Wipe only
21000XS-316L	½" High Temperature 316L Stainless Steel Ring Blade™ Air Wipe plus Filter with Auto Drain
21001XS-316L	1" High Temperature 316L Stainless Steel Ring Blade™ Air Wipe plus Filter with Auto Drain
21002XS-316L	2" High Temperature 316L Stainless Steel Ring Blade™ Air Wipe plus Filter with Auto Drain
21003XS-316L	3" High Temperature 316L Stainless Steel Ring Blade™ Air Wipe plus Filter with Auto Drain
21004XS-316L	4" High Temperature 316L Stainless Steel Ring Blade™ Air Wipe plus Filter with Auto Drain
21005XS-316L	5" High Temperature 316L Stainless Steel Ring Blade™ Air Wipe plus Filter with Auto Drain
21006XS-316L	6" High Temperature 316L Stainless Steel Ring Blade™ Air Wipe plus Filter with Auto Drain
21007XS-316L	7" High Temperature 316L Stainless Steel Ring Blade™ Air Wipe plus Filter with Auto Drain
22000XS-316L	½" High Temperature 316L Stainless Steel Ring Blade™ Air Wipe + Filter with Auto Drain & Reg. with Gauge
22001XS-316L	1" High Temperature 316L Stainless Steel Ring Blade™ Air Wipe + Filter with Auto Drain & Reg. with Gauge
22002XS-316L	2" High Temperature 316L Stainless Steel Ring Blade™ Air Wipe + Filter with Auto Drain & Reg. with Gauge
22003XS-316L	3" High Temperature 316L Stainless Steel Ring Blade™ Air Wipe + Filter with Auto Drain & Reg. with Gauge
22004XS-316L	4" High Temperature 316L Stainless Steel Ring Blade™ Air Wipe + Filter with Auto Drain & Reg. with Gauge
22005XS-316L	5" High Temperature 316L Stainless Steel Ring Blade™ Air Wipe + Filter with Auto Drain & Reg. with Gauge
22006XS-316L	6" High Temperature 316L Stainless Steel Ring Blade™ Air Wipe + Filter with Auto Drain & Reg. with Gauge
22007XS-316L	7" High Temperature 316L Stainless Steel Ring Blade™ Air Wipe + Filter with Auto Drain & Reg. with Gauge

EXTRA 316L STAINLESS STEEL SHIMS - .002" (.050 MM) FOR STAINLESS RING BLADE™ AIR WIPE SYSTEMS

PART NO.	DESCRIPTION
20100-316L SYSTEM	½" 316L Stainless Steel Shim - .002" (.050 mm) for ½" 316L Stainless Ring Blade™ Air Wipe System
20101-316L SYSTEM	1" 316L Stainless Steel Shim - .002" (.050 mm) for 1" 316L Stainless Ring Blade™ Air Wipe System
20102-316L SYSTEM	2" 316L Stainless Steel Shim - .002" (.050 mm) for 2" 316L Stainless Ring Blade™ Air Wipe System
20103-316L SYSTEM	3" 316L Stainless Steel Shim - .002" (.050 mm) for 3" 316L Stainless Ring Blade™ Air Wipe System
20104-316L SYSTEM	4" 316L Stainless Steel Shim - .002" (.050 mm) for 4" 316L Stainless Ring Blade™ Air Wipe System
20105-316L SYSTEM	5" 316L Stainless Steel Shim - .002" (.050 mm) for 5" 316L Stainless Ring Blade™ Air Wipe System
20107-316L SYSTEM	7" 316L Stainless Steel Shim - .002" (.050 mm) for 7" 316L Stainless Ring Blade™ Air Wipe System

